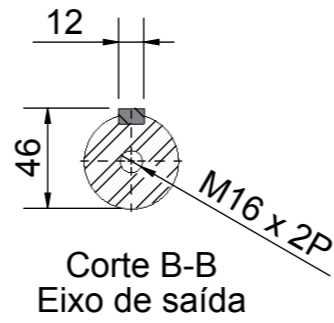
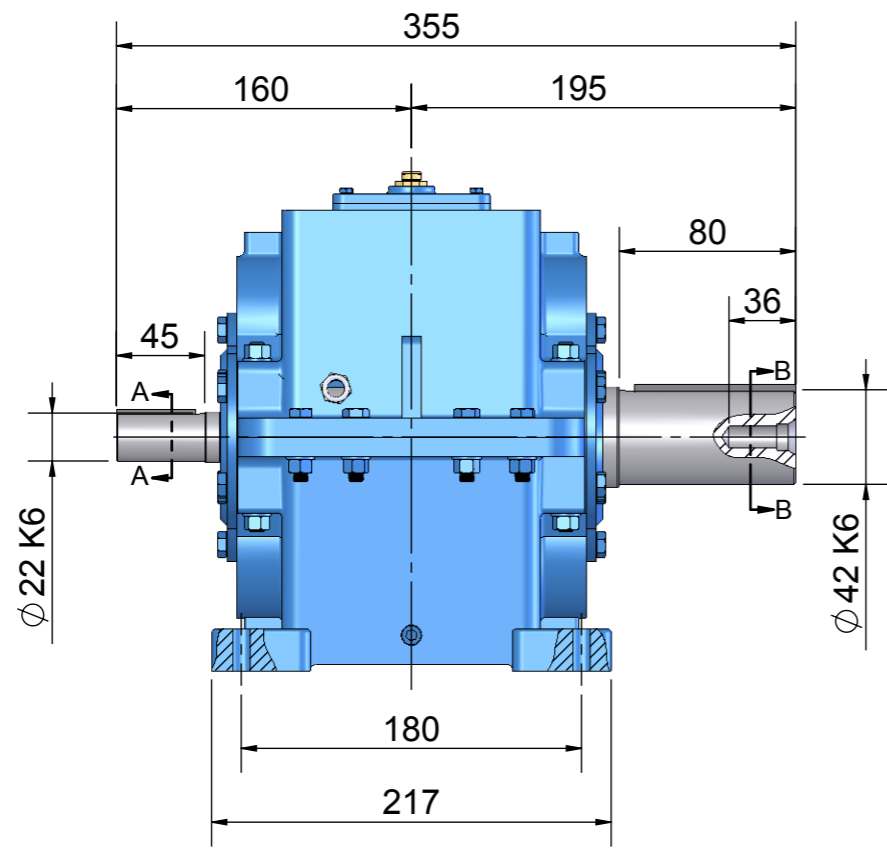
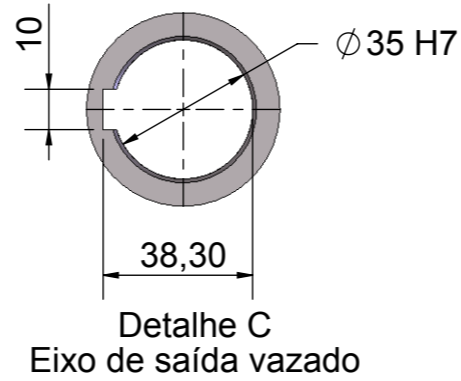
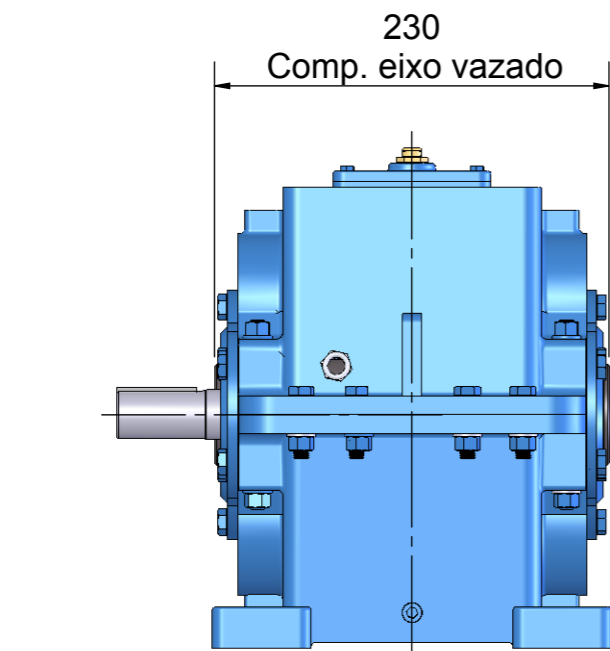
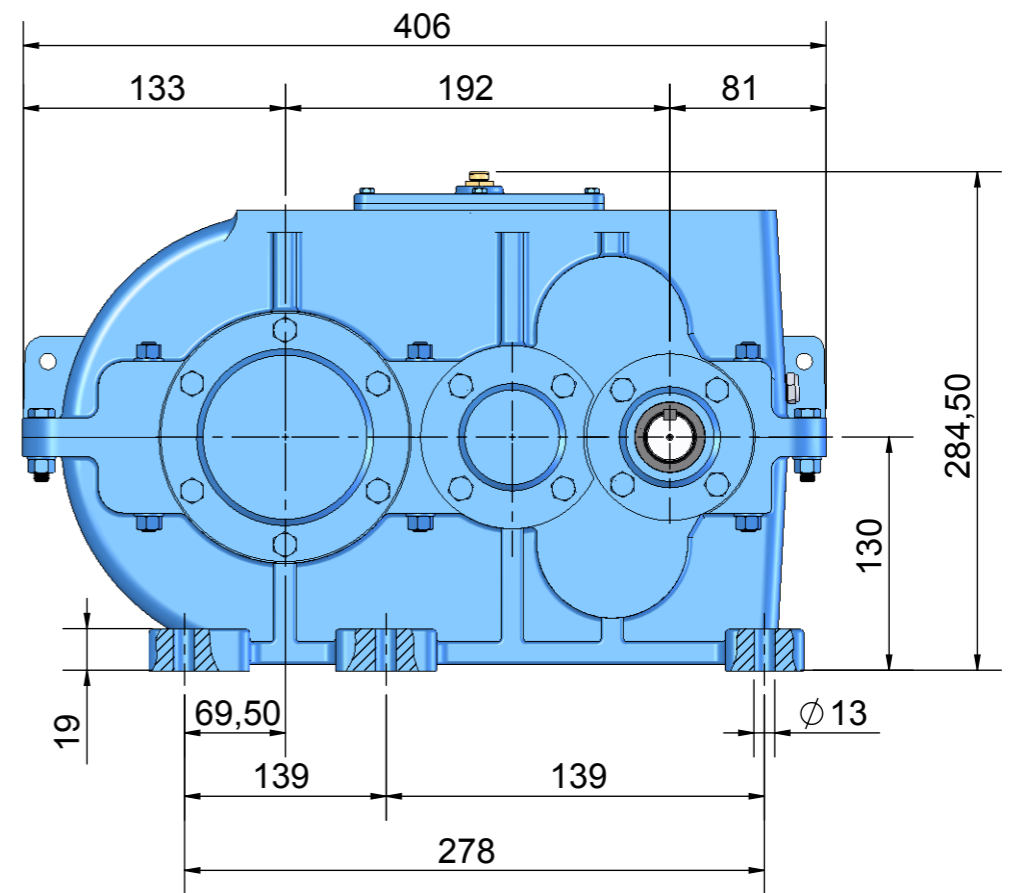


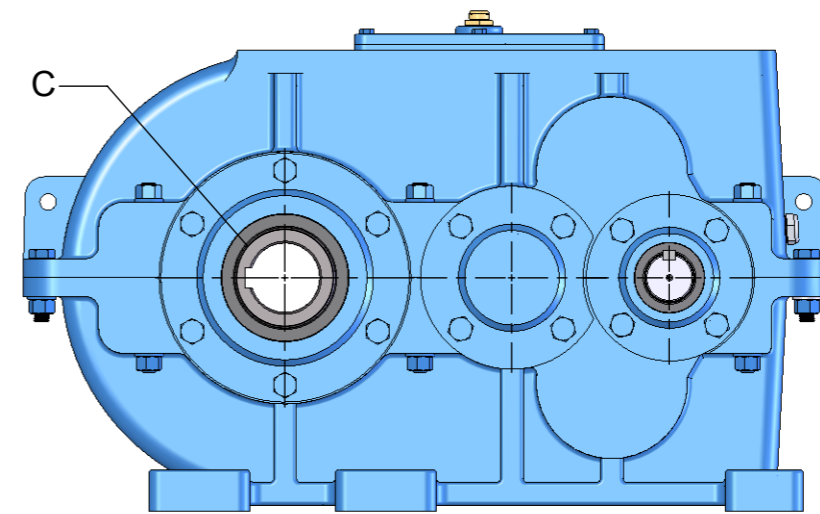
Corte A-A  
Eixo de entrada



Corte B-B  
Eixo de saída



Detalhe C  
Eixo de saída vazado



MODELO Regime de trabalho uniforme 10h/dia, 10 arranques/h Redução Nominal Tabelada - Padrão de linha

MODELO		6,3	7,1	8	9	10	11,2	12,5	14	16	18	20	22,4	25	28	31,5	35,5	40	45	
<b>CH-192D</b>	Potência máx. admitida na entrada	CV	22,33	20,50	17,47	15,59	14,72	13,06	11,55	10,16	8,86	7,76	7,22	6,39	5,76	5,21	4,50	4,08	3,82	3,27
	Momento de torção na saída	Kgf.m	55,41	55,36	55,38	55,36	55,38	55,37	55,41	55,35	55,35	55,41	55,36	55,38	55,35	55,34	55,33	55,36	55,43	55,36
	Momento de torção na saída	N.m	543,57	543,08	543,27	543,08	543,27	543,17	543,57	542,98	542,98	543,57	543,08	543,27	542,98	542,88	542,78	543,08	543,76	543,08
	Redução efetiva	i	6,45	7,02	8,24	9,23	9,78	11,02	12,47	14,16	16,24	18,56	19,93	22,53	24,98	27,61	31,96	35,27	37,72	44,01
	Rotação efetiva no eixo de saída	n2	271,32	249,29	212,38	189,60	178,94	158,80	140,34	123,59	107,76	94,29	87,81	77,67	70,06	63,38	54,76	49,62	46,39	39,76

